


iBEAM[®] iWitness[™] QUICK START GUIDE

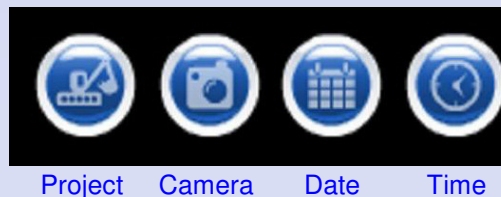
ARCHIVED IMAGES

GETTING STARTED

- Select the [client login](#) button on the iBEAM Systems home page (www.ibeamsystems.com).
- Log on using the user name and password assigned to you.

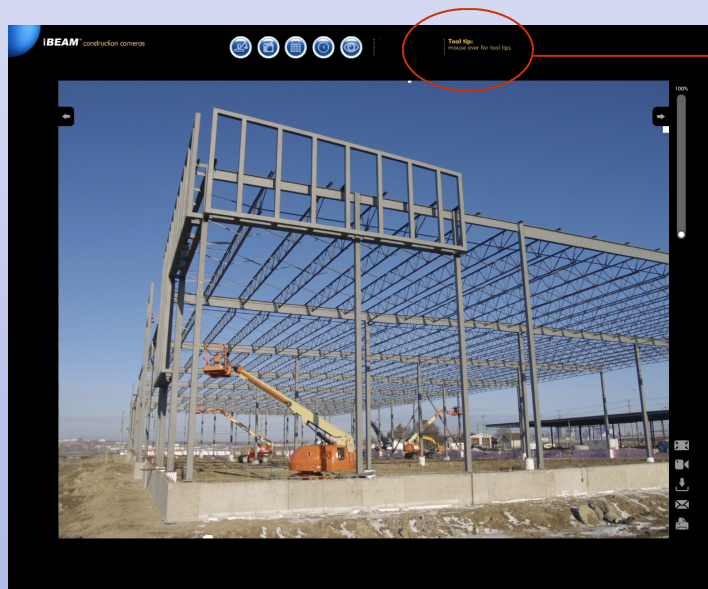
FINDING AN IMAGE

- Click on the project (and camera) to view.
- The most recently archived image will be displayed first.
- Use the Left arrow  to move to the previous image.



WORKING WITH AN IMAGE

- Use the Image Tools to work with the displayed image:





Hint: **Tool Tips** will update as the cursor moves to a new tool

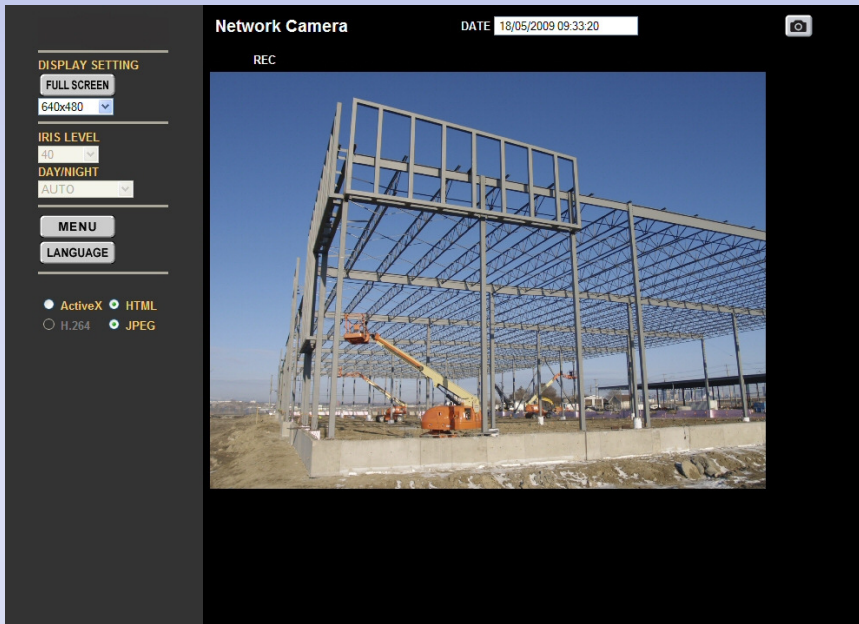
Zoom

Display full screen
View live camera
Download Image
Email Image
Print Image

LIVE CAMERA

Click the live camera icon  in the Image Archive or the live camera button  on your camera's home page.

First time setup: Install the Active X plug-in when prompted.



Use the drop down menu to change the image size.

Click the camera icon to snap a picture. 

RECORDED VIDEO

GETTING STARTED

- Open the camera enclosure and remove the video hard drive that is plugged into the camera.
- Plug the spare hard drive into the camera.
- Call iBEAM (800.403.0688) to initialize recording on the spare hard drive.

THE CAMERA WILL NOT RESUME RECORDING UNTIL THE SPARE HARD DRIVE IS INITIALIZED.

- Download, unzip and save iWitness video playback software from <http://www.ibeamsystems.com/utilities>. Requires Windows XP or Vista with at least 300MB of storage available.
- Plug video hard drive into your computer (allow drivers to install).

RECORDED VIDEO (continued)

Open the iWitness_Software folder on your computer and open HDCDownloader.vbs

Select **Copy from SD/HDD**


Browse to the video hard drive you just plugged in and navigate to the \CAMHD1 directory

Make sure the **JPEG** box is checked

Click the **Time/Date Search** button

Select the Start and End time to download

Tip: Available dates are listed at the top of this window. Use the Archived images to pinpoint the range of video to download.

Select  to indicate the location where the downloaded video will be saved.

Check the **DLViewer** box to include the Viewer software in the downloaded video folder (for sharing)

Select **Download**

A window will appear showing the size of the downloaded data. Select **Yes** to download

When downloading is complete, select **OK**
Select **Cancel** to close the Time/Date Search Window

Select **Play** on the HDC Downloader window to view the downloaded video

Use the DL Viewer tools to view the video and save still images

Tip: To share the video, copy the entire folder (including the Viewer software).

